

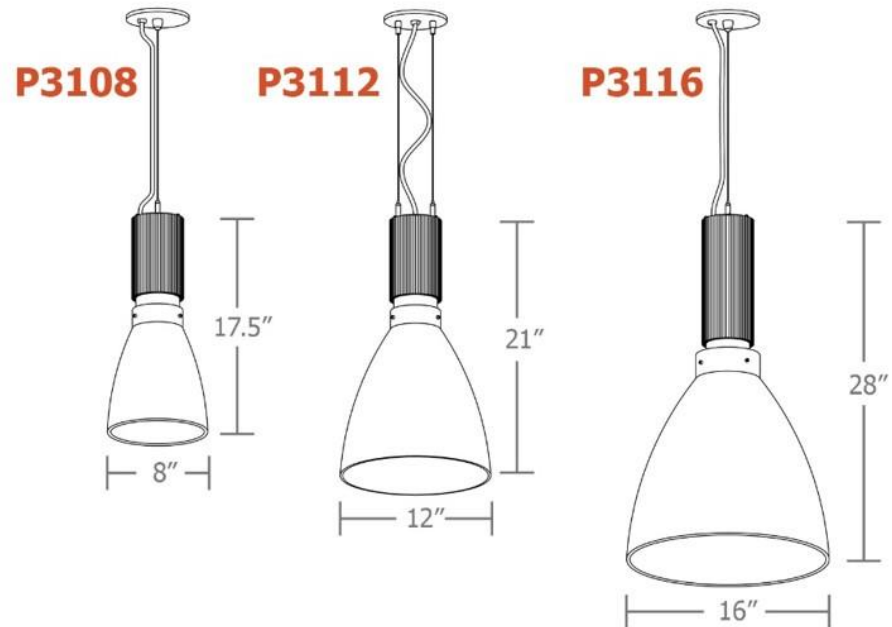


imago ii™ 5-slider

your lighting rep has
recommended the **imago ii™**
pendant for your project
Let's take a quick look:



sizes and lumens



- P3108 (8") / 1630 – 4025 lm
- P3112 (12") / 1630 – 4025 lm
- P3116 (16") / 2120 – 5025 lm



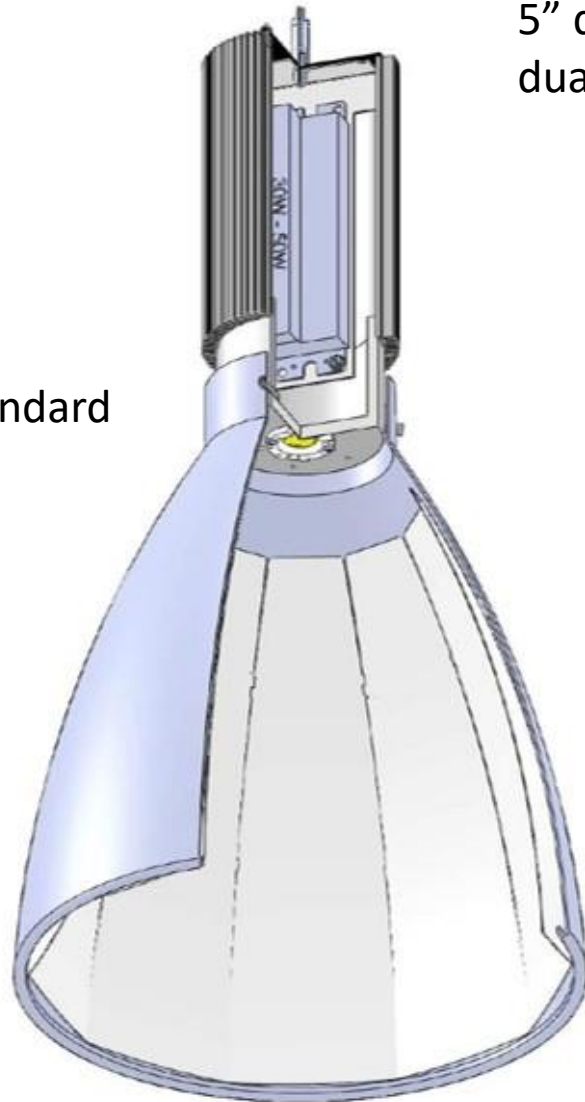
construction

integral programmable driver, constant current, universal input (120-277v), field maintainable, 0-10v controllable to 1% dimming.

single COB LED module **90+ CRI** standard
2700K, 3000K, 3500K and 4000K.

.063 spun aluminum parabolic reflector with rolled bottom edge for added strength, anodize paint finish standard, optional satin black

high reflectance matte white segmented internal reflector for optimal lumen efficiency



5" dia. spun steel canopy with single or dual field adjustable stainless-steel cables

powerhead available in 2 anodized finishes and 12 standard powder coat paint finishes + custom RAL colors

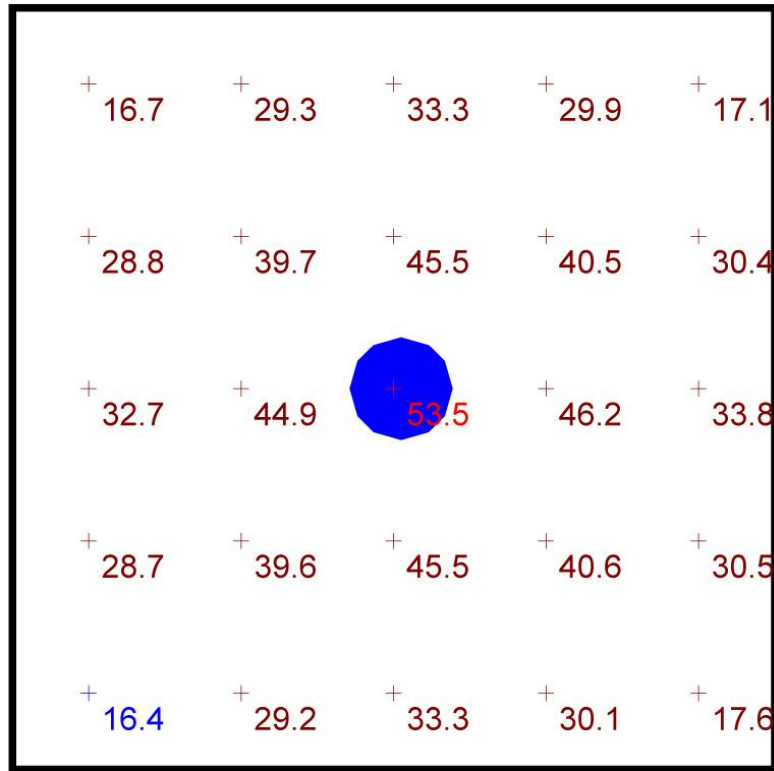
(POC) power over cable suspension system option provides a clean look without the need for a separate power cord

optional colored cloth power cord in blue, orange, purple, red, or white & gray dot

optional P95 flat acrylic bottom lens with three thumbholes

performance

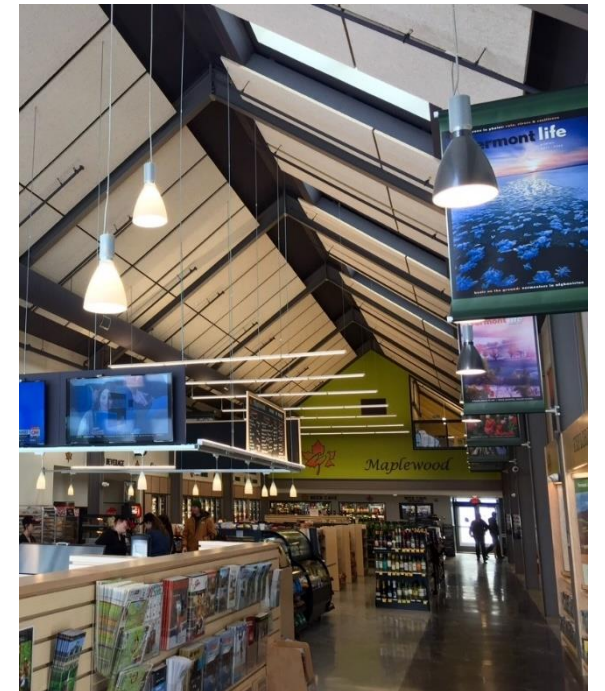
Statistics						
Description	Symbol	Avg	Max	Min	Max/Min	Avg/Min
imago.ii	+	33.4 fc	53.5 fc	16.4 fc	3.3:1	2.0:1



Plan View
Scale - 1" = 2ft

- 10' x 10' x 14'H space
- 80/50/20 reflectances
- bottom of fixture at 12' aff
- FC readings at 2.5' aff
- layout conducted using P3116 unit with HX lumen 90cri package providing 5025 delivered lumens





www.impactltg.com

- spec sheet and color chart
- photometric files and BIM models
- built to order in Saint Louis, MO, USA
- 4-week lead time

imago ii™ 5-slider

